

NEXT GENERATION DPP®

# DPP® HIV-Syphilis Assay

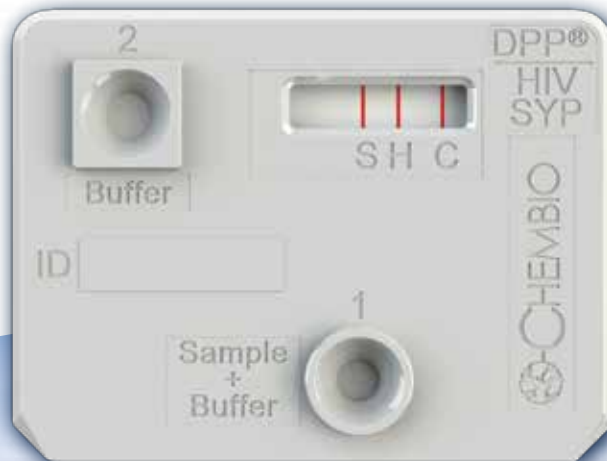
- Accurate results with documented sensitivity to antibodies to HIV 1/2 and *Treponema pallidum*, the causative agent of syphilis\*
- DPP® (Dual Path Platform) technology well suited to multiplexing
- Rapid 15-minute results
- Room temperature testing, shipping, and storage
- Simple to perform
- Suitable for programs to prevent mother-to-child transmission of HIV and Syphilis

## HIV-Syphilis: Two Assays in One

There is an estimated 2- to 5-fold increased risk of acquiring HIV if exposed to that infection when syphilis is present.<sup>1</sup>

HIV and syphilis affect similar patient groups and co-infection is common.<sup>2</sup>

### Distinct Test and Control Lines



only 10µL required for all blood matrices

**Manufactured in the USA**

 **CHEMBIO**  
DIAGNOSTIC SYSTEMS, INC.  
Rapid Tests for Earlier Treatment™

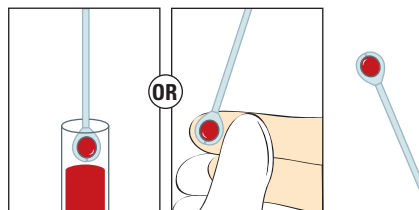
\* See product insert for complete performance details

<sup>1</sup><http://www.cdc.gov/std/syphilis/STDFact-MSM-Syphilis.htm>

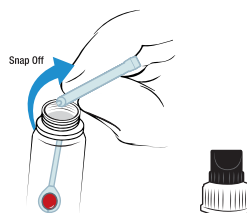
<sup>2</sup>Lynn WA, Lightman S. Syphilis and HIV: a dangerous combination. *Lancet Infect Dis.* 2004 Jul;4(7):456-66

# Administering Test\*

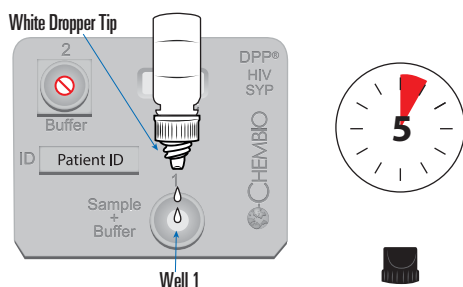
**1** OBTAIN a blood sample with sample loop.



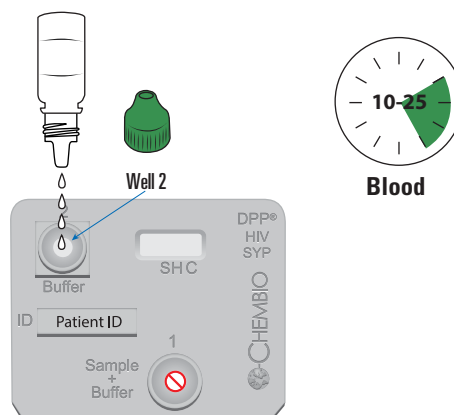
**2** INSERT the sample loop with collected blood sample into the bottom of the SampleTainer® bottle. BEND & TWIST to detach from loop end remaining in vial. REPLACE black/white cap. GENTLY SHAKE SampleTainer® bottle 10 seconds.



**3** REMOVE the black cap. ADD 2 drops into the Sample + Buffer well 1, holding bottle vertically. WAIT 5 minutes.



**4** ADD 4 drops of running buffer (green cap) to Buffer well 2, holding bottle vertically. READ result between 10 and 25 minutes after the addition of the running buffer to well 2.



\* Please refer to package insert for full procedure details

## Interpretation of Results

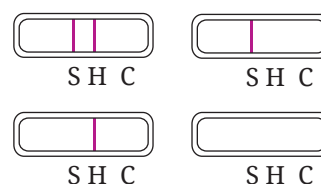
**NONREACTIVE RESULT** One pink/purple line in the CONTROL (C) area, with no lines in the TEST (S) or TEST (H) areas, is a NONREACTIVE result.



**REACTIVE RESULT** One pink/purple line in the CONTROL (C) area, with lines in the TEST (S) and/or TEST (H) areas is a reactive result.



**INVALID RESULT** If no control line appears, results are invalid regardless of the presence or absence of a test line.



Description	Contents	Catalog Number
DPP® HIV-Syphilis Assay	20 Individually Pouched Single Use Test Devices with Desiccant 20 Disposable 10 µL Sample Loops 20 DPP® SampleTainer® Sample Collection Bottles – BLACK and WHITE Cap, 1 mL 1 DPP® Running Buffer Bottle – GREEN Cap, 6 mL Product Insert	65-9525-0